

Surface Mount Low Pass Filter

SCLF-65+
SCLF-65

50Ω DC to 65 MHz

Maximum Ratings

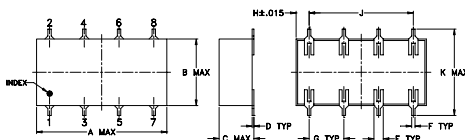
Operating Temperature	-40°C to 85°C
Storage Temperature	-55°C to 100°C
RF Power Input	0.5W max.

Permanent damage may occur if any of these limits are exceeded.

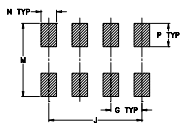
Pin Connections

INPUT	1
OUTPUT	8
GROUND	2,3,4,5,6,7

Outline Drawing



PCB Land Pattern

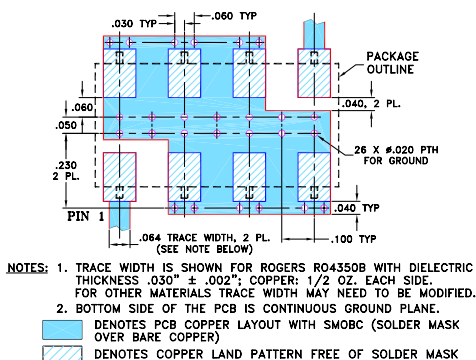


Suggested Layout,
Tolerance to be within ±0.02

Outline Dimensions (inch/mm)

A	B	C	D	E	F	G
0.75	0.38	0.28	0.01	0.05	0.02	0.2
19.05	9.65	7.11	0.25	1.27	0.51	5.08
H	J	K	M	N	P	wt
0.075	0.6	0.45	0.47	0.1	0.15	grams
1.91	15.24	11.43	11.94	2.54	3.81	1.60

Demo Board MCL P/N: TB-187+ Suggested PCB Layout (PL-049)



Features

- wide selection of cut-off frequencies
- excellent rejection
- custom models available

Applications

- defense communications
- receivers/transmitters
- harmonic rejection of VCOs



CASE STYLE: YY161
PRICE: \$8.95 ea. QTY (1-9)

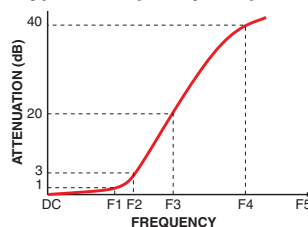
+ RoHS compliant in accordance with EU Directive (2002/95/EC)

The +Suffix identifies RoHS Compliance. See our web site for RoHS Compliance methodologies and qualifications.

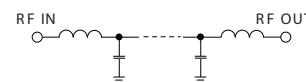
Electrical Specifications

Parameter	F#	Frequency (MHz)	Min.	Typ.	Max.	Unit	
Pass Band	Insertion Loss	DC-F1	DC-65	—	—	1.0	dB
	Freq. Cut-Off	F2	71	—	3.0	—	dB
	VSWR	DC-F1	DC-65	—	1.3	—	:1
Stop Band	Rejection Loss	F3-F4	86-96	20	—	—	dB
		F4-F5	96-510	40	—	—	dB
	VSWR	F3-F5	86-510	—	18	—	:1

Typical Frequency Response

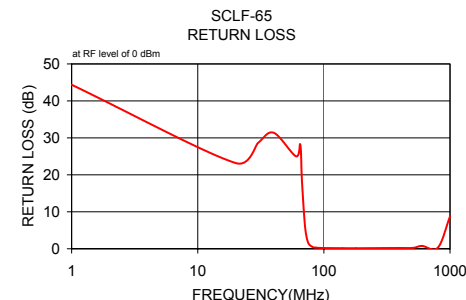
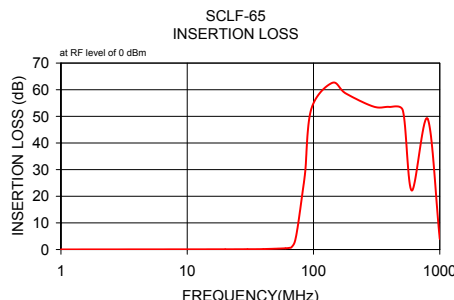


Electrical Schematic



Typical Performance Data

Frequency (MHz)	Insertion Loss (dB)		Return Loss (dB)
	\bar{x}	σ	
1.00	0.03	0.00	44.37
20.00	0.10	0.00	23.19
30.00	0.12	0.01	28.62
40.00	0.17	0.00	31.38
60.00	0.45	0.01	25.03
65.00	0.65	0.02	28.17
67.00	0.88	0.05	18.31
71.00	2.86	0.26	5.83
75.00	8.55	0.56	1.65
82.00	21.71	0.71	0.44
86.00	29.33	0.78	0.32
96.00	52.71	2.06	0.21
140.00	62.52	1.00	0.16
180.00	58.61	0.65	0.15
300.00	53.64	0.36	0.20
400.00	53.53	0.32	0.21
510.00	52.19	0.80	0.24
600.00	22.14	0.44	0.76
800.00	49.13	0.65	0.28
1,000.00	3.96	0.08	8.74



Mini-Circuits
ISO 9001 ISO 14001 AS 9100 CERTIFIED

P.O. Box 350166, Brooklyn, New York 11235-0003 (718) 934-4500 Fax (718) 332-4661 The Design Engineers Search Engine Provides ACTUAL Data Instantly at minicircuits.com

IF/RF MICROWAVE COMPONENTS

For detailed performance specs & shopping online see web site

Notes: 1. Performance and quality attributes and conditions not expressly stated in this specification sheet are intended to be excluded and do not form a part of this specification sheet. 2. Electrical specifications and performance data contained herein are based on Mini-Circuits' applicable established test performance criteria and measurement instructions. 3. The parts covered by this specification sheet are subject to Mini-Circuits standard limited warranty and terms and conditions (collectively, "Standard Terms"); Purchasers of this part are entitled to the rights and benefits contained therein. For a full statement of the Standard Terms and the exclusive rights and remedies thereunder, please visit Mini-Circuits' website at www.minicircuits.com/MCLStore/terms.jsp.

REV. D
M111708
SCLF-65
100119